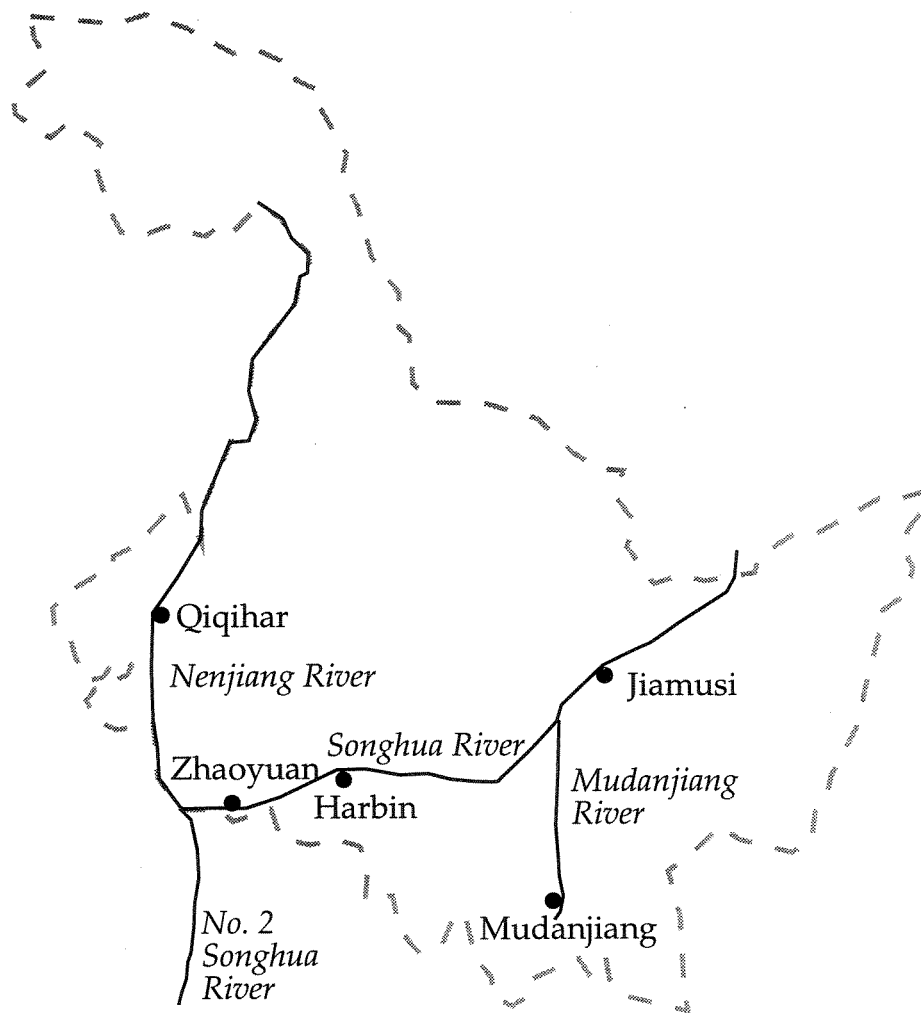


REPORT SNO 3641-97

Summary Report

Surveillance of
Water Quality in the
Songhua River System in
Heilongjiang Province,
P.R. of China

Harbin, Heilongjiang 26
February - 3 March 1997



Main Office

P.O. Box 173, Kjelsås
N-0411 Oslo
Norway
Phone (47) 22 18 51 00
Telefax (47) 22 18 52 00

Regional Office, Sørlandet

Televeien 1
N-4890 Grimstad
Norway
Phone (47) 37 29 50 55
Telefax (47) 37 04 45 13

Regional Office, Østlandet

Sandvikaveien 41
N-2312 Ottestad
Norway
Phone (47) 62 57 64 00
Telefax (47) 62 57 66 53

Regional Office, Vestlandet

Nordnesboder 5
N-5008 Bergen
Norway
Phone (47) 55 30 22 50
Telefax (47) 55 30 22 51

Akvaplan-NIVA A/S

Søndre Tollbugate 3
N-9000 Tromsø
Norway
Phone (47) 77 68 52 80
Telefax (47) 77 68 05 09

Title Workshop Summary Report: Surveillance of Water Quality in the Songhua River System in Heilongjiang Province, P.R. of China Harbin, Heilongjiang 26 February-3 March 1997.	Serial No. 3641-97	Date March, 1997
	Report No. Sub-No. 0-96278	Pages Price
Author(s) Wathne Bente M., NIVA Borgvang Stig A., NIVA Dagestad Kjersti, NIVA	Topic group Environmental Technology	Distribution
	Geographical area China	Printed NIVA

Client(s) NORAD	Client ref. CHN17
--------------------	----------------------

Abstract
 This summary report describes the discussions and the commitments made, within the project "Surveillance of Water Quality in the Songhua River System in Heilongjiang Province, P.R. of China", during meetings in Harbin, Heilongjiang 26 February- 3 March 1997.

4 keywords, Norwegian 1. ENSIS 2. Overvåking 3. Vassdrag 4. Prosjektmøte	4 keywords, English 1. ENSIS 2. Surveillance 3. Water system 4. Project meeting
--	---

Kjersti Dagestad
 Kjersti Dagestad

Project manager-Subproject 2

ISBN 82-577-3202-8

Bente M. Wathne
 Bente M. Wathne

Head of Research Department

SUMMARY REPORT

**Harbin Environmental Protection Bureau (H/EPB),
Harbin 26 February-3 March 1997**

Place: Premises of the Heilongjiang Province Environmental Protection Agency

Meeting between:

**The Harbin Environmental Protection Bureau (H/EPB) and the
Norwegian Institute for Water Research (NIVA)**

Participation

H/EPB

Mr Wang Jing Chun, Vice Director

Mr Guo Yuan, Division Chief

Ms Chen Aifeng, Vice Director of HEMCS

Mr Chen Jiahou, Vice Director of Control Lab of HEMCS

Ms Wu Yue Hui, Project Officer

Mr Chen Yong, Interpreter

Ms. Li Xiangju, Vice Director

NIVA

Ms Bente Wathne, Project leader

Ms Kjersti Dagestad, Scientific adviser

Mr Stig A. Borgvang, Scientific adviser

Contents

CONTENTS	2
AGENDA	3
1. WEDNESDAY 26 FEBRUARY 1997	3
1.1 MAPS	3
1.2 MONITORING DATA	4
<i>Water sampling</i>	4
<i>Water flow</i>	4
<i>Industry (including mining activities)</i>	4
<i>Domestic waste water</i>	4
<i>which catchments/sub-catchments these administrative units drain into;</i>	4
<i>Agriculture</i>	4
2. THURSDAY 27 FEBRUARY 1997	6
2.1 ANNEX TO THE CONTRACT	6
2.2 CURRENT SITUATION WITH REGARD TO THE RUNNING OF THE PROJECT	6
2.3. HYDROLOGICAL DATA	6
2.4. <i>Instrument list</i>	7
3. SATURDAY 1 MARCH 1997	7
3.1 ADJUSTMENT OF FUNDING	7
3.2 WORK PLAN REVISIONS	7
3.3 MAPS	7
4. SUNDAY 2 MARCH 1997	8
4.1 CLASSIFICATION OF WATER QUALITY BASED ON CHEMICAL MEASUREMENTS	8
4.2 QUALITY ASSURANCE/ QUALITY CONTROL FOR SAMPLING AND ANALYSIS IN LABORATORY	9
5. MONDAY 3 MARCH 1997	10
5.1 COMPUTER EQUIPMENT	10
5.2 CONTACT PERSONS	10
5.3 ADOPTION OF THE SUMMARY REPORT OF NIVA'S FEBRUARY-MARCH 97 VISIT TO HARBIN	10

ANNEXES

Annex 1	Agenda for the visit
Annex 2	Annex to the contract
Annex 3	Sonhua River System-Water Quality Instrumentation Package
Annex 4	Agreed tasks prioritised for funding within the budget
Annex 5	Detailed Workplan
Annex 6	Data Requirements
Annex 7	List of computer equipment
Annex 8	List of project organisation

Agenda

The agenda for the visit, as suggested by H/EPB, was agreed without amendments, and is at **Annex 1**.

1. Wednesday 26 February 1997

1.1 Maps

1.1.1 Digitalised maps

NIVA/NORGIT will establish contact between the H/EPB and the Chinese Meteorological Bureau.

H/EPB will provide as many "geographical subject maps" as possible e.g. agricultural or forest coverage, settlements, river systems.

1.1.2 Basic paper copy maps

H/EPB will provide 1:500 000¹/1:1000 000 paper copy maps for the preliminary presentation of:

- industrial pollution sources (data collected by H/EPB and H/EMCS, in total about 483* pollution sources) (map 1), **by 1 May 1997²** (originally February 1997);
- personal equivalents per administrative statistical unit and from each of the 11 main cities (map 2), **by 1 May 1997** (originally September 1997);
- river systems i.e. Songhua river and its main tributaries, lakes and the relevant catchment/sub-catchments (map 3) 1:1000000, **by 1 May 1997** (originally September 1997);
- monitoring stations (manual and automatic), including those where samples are taken for biological analysis, and hydrological monitoring stations (map 4), **by 15 March 1997**.
- the coverage of agricultural practices, mountain areas, forested areas etc (land coverage, map 5), **by 1 May 1997**; and
- user interests (map 6), **by 1 May 1997**.

* 483 industrial plants carry out measurements of their discharges/emissions, out of which 75 are responsible for 70% of the pollution load to water. 292 industrial plants have been identified as main pollution sources, out of which 217 have emissions only to air, 61 have emissions to air and discharges to water and 14 have discharges to water only. Less important sources to water and air (191) accounts for 30% of the total pollution load.

¹ The issue of the "1:500000 scale map" will be discussed at the meeting between SSTC and NORAD, 5-6 March 1997.

² The 70-80 main industrial pollution sources by 15 March 1997. Those of the remaining 191 industrial sources having discharges to water, by 1 May 1997.

1.2 Monitoring data

Water sampling

H/EPB provided a complete data set from the Foxpro data base for the 1995 monitoring year (floppy disk). NIVA expressed the wish to obtain a copy of the data from the whole monitoring period, i.e. 1988-1996, in order to enable a better scientific assessment of the quality status of the Songhua river and its tributaries.

Water flow

Furthermore **H/EPB** agreed to provide the relevant hydrological data on the water flow at the hydrological stations in 1995, **by 1 June 1997**, subject to agreement on the finances (see also section 1.2, bullet 4).

Industry (including mining activities)

H/EPB agreed to provide data on discharges and other relevant information from the industrial plants in the catchment area of the Songhua river (see also section 1.2, bullet 1), according to the notification form provided by NIVA (see Annex 6). This notification form also includes different deadlines for the various data requirements.

NIVA emphasised that it was important that H/EPB provided a list of unique identification codes for each industrial plant. The industrial plants should be marked with this code on the map. In the case of big cities with several industrial plants, the industries should only be marked once, but indicated with a number range with detailed specification on the list (e.g source 12-20). Furthermore the primary recipient for the industrial outlets should be indicated for each industrial plant.

Domestic waste water

H/EPB agreed to provide, **by 1 May 1997** (see also section 1.2, bullet 2):

- data on the personal equivalents per statistical administrative units;
- which catchments/sub-catchments³ these administrative units drain into;
- data on the number of habitants in the 11 main cities located in the catchment area of the Songhua river.

Agriculture

H/EPB agreed to provide data, **by September 1997**, on:

- the use of pesticides on the basis of the 13 sale statistics areas;
 - the use of artificial fertiliser on the basis of the 13 sale statistics areas;
 - agriculture coverage per administrative unit (by 1 May 1997); and
- a list of the most commonly used pesticides, if available (see also section 1.2, bullet 5).

³ Subject to the availability of appropriate maps NIVA, in co-operation with H/EPB, will carry out this work

Monitoring activities

H/EPB agreed to provide a map **by 15 March 1997** (see also section 1.2, bullet 4) indicating:

- the 46 monitoring points on a 1:100000 map following an agreed code in order to allow the link to the monitoring data (monitoring station code);
- the 20 hydrological monitoring stations with a special indication of the 6 main stations;
- the biological monitoring stations;
- a table which indicates the monitoring station codes and gives an overview of responsible monitoring organisation.

Furthermore **H/EPB** agreed to provide available data from 1996, **by 3 March 1997**, and from 1995, **by 1 April 1996**:

- invertebrates (benthic organisms), 4 times a year, at 4 stations (2 stations in 1995) to be indicated specifically on a map;
- phytoplankton (glass in water for 2 weeks, composition, growth rate, biomass).

2. Thursday 27 February 1997

2.1 Annex to the Contract

Ms Wathne (NIVA) presented some proposed, minor textual amendments to the contract between H/EPB and NIVA (insurance for Norwegian participants, payment, hourly rates, etc.). These proposals were accepted by H/EPB and the contract was amended accordingly (see **Annex 2**).

2.2 Current situation with regard to the running of the project

H/EPB reported on the following points related to the progress of the project:

- with regard to the "Workshop Report" (Report SNO 3615-97) H/EPB confirmed that the monitoring station with on-line system in the Mudanjiang will be at the drinking water plant inlet at Mudanjiang;
- a working group for the establishment of the 4 on-line monitoring stations has been set up;
- the procedure for H/EPB to honour the invoices to NIVA will be discussed at the meeting between SSTC and NORAD in Beijing 4-5 March 1997;
- the routines for purchase of instruments in the framework of the project will be clarified at the meeting in Beijing 4-5 March 1997 between SSTC and NORAD as SSTC wants NORAD to agree that SSTC commission a Chinese import/export company to deal with the questions related to the importation of the equipment;
- H/EPB explained that H/EPB and local EMS will allocate additional man resources for the smooth running of the project;
- H/EPB has carried out simultaneous water quality measurements in the Songhua River System, at 46 monitoring points, as well as in the Nenjiang. "2 monitoring campaigns" has been carried out, namely 20 October 1996 and 15 January 1997.

2.3. Hydrological Data

Following a request from NIVA, H/EPB explained the Heilongjiang Hydrological Agency is the competent authority as regards hydrological measurements. The measurement points in the Songhua River System do not concur with the monitoring points for the chemical and biological monitoring carried out by H/EPB. However, H/EPB is in principle willing to co-ordinate such measurements on a regular basis during the chemical and biological monitoring campaigns, provided the relevant instruments are made available.

Furthermore it was agreed that NOK 140 000,- should be allocated to purchase data from the monitoring sites used by the Heilongjiang Hydrological Agency (see Annex 4). Before the data are purchased, NIVA will in each case make an assessment of the data required i.e. choice of stations and frequency.

2.4. Instrument list

The instrument list proposed by NIVA was discussed item by item. After some adjustments NIVA and H/EPB agreed on the revised instrument list which will be forwarded to SSTC for information (see **Annex 3**). After the meeting in Beijing meeting (4-5 March 1997) NIVA will start the "purchase procedure" according to the future agreement between SSTC and NORAD to be made at the Beijing meeting, 4-5 March 1997.

During the discussions on the instrument list H/EPB confirmed that no on-line measurement of phosphate will take place. In view of the importance of phosphorus in the assessment of the water quality in river systems, **H/EPB undertook** to analyse the total phosphorus concentrations in the river as part of the regular monitoring programme (manual samples).

3. Saturday 1 March 1997

3.1 *Adjustment of funding*

The agreed adjustments are described in attached list "Agreed tasks prioritised for funding within the budget" (see **Annex 4**).

3.2 *Work Plan revisions*

The detailed Work Plan for 1997 was developed based on comments from H/EPB and NIVA (see **Annex 5**) and will be forwarded for information to the Beijing-meeting (4-5 March 1997).

3.3 *Maps*

H/EPB provided a copy of a map of the Heilongjiang province which will form the basis for the initial overview of data related to the Songhua river system. The NIVA project leader expressed her appreciation of the efforts made by the H/EPB.

In order for NIVA to start its assessment of the water quality status as soon as possible, it was agreed that H/EPB should send the version of the maps as they are on the 14 March 1997 to Shanghai by express delivery to the NIVA representative on the 15 March 1997 (further details to be agreed before the 15 March 1997).

H/EPB and NIVA agreed on a working procedure and time table for the further development of the map, see Annex 5 on the project planning and Annex 6 on data requirements.

4. Sunday 2 March 1997

4.1 *Classification of water quality based on chemical measurements*

The classification of water quality is based on the following methods and data:

- the water quality is monitored approximately 8 times a year at 46 locations in the river. The monitoring takes place during three periods which represent the typical water flow pattern:
 - low flow season (January-February)
 - normal season (May and October)
 - flood season (June-September)
- the water quality is analysed based on 10 standard parameters corresponding to the current National Criteria for water quality. The parameters are listed below⁴:
 - pH
 - nitrate
 - nitrite
 - ammonia
 - total phosphorus
 - COD_{Mn}
 - dissolved oxygen
 - BOD₅
 - Arsen
 - Chromium (6⁺)
 - Phenols
- the arithmetic yearly mean⁵ is calculated for each parameter, and the water quality class is consequently determined by “the worst parameter “ (no weighting of parameters);
- the samples are taken at 1/2 meters depth both in rivers and lakes;
- lakes are classified according to the same principles as rivers

⁴ Mercury and Cadmium are sometimes included in the analysis.

⁵ The yearly arithmetic mean is calculated as the average of the three season averages ($y = (\Sigma(y_1 + y_2 + y_3)/3)$, where y_1 =average in low flow season, y_2 =average in normal season, and y_3 =average in flood season)

4.2 Quality assurance/ Quality Control for sampling and analysis in laboratory

H/EPB informed NIVA about

- sampling instructions/methods/procedures; and
- methods/instructions/procedures at laboratories which have been adopted by H/EPB to increase the quality of the analysed parameters.

H/EPB will provide NIVA with a description in English of the above mentioned by **1 May 1997** at the latest, based on the listing below. If needed, NIVA will specify this list further by **10 March 1997**.

Descriptions needed :

Sampling: Collection procedures (method and equipment used), field treatment of samples (preservation) and procedures for transport and storage of samples.

Laboratory: Comparison of results with other analytical methods, comparison of results with other laboratory, use of certified reference material (for instance to calibrate instruments), and use of ionic balance to control if sum cations are equal to sum anions.

5. Monday 3 March 1997

5.1 Computer equipment

On 27 February 1997 Ms Wathne handed over a quote from NORGIT for computer equipment to be purchased. After discussion and some clarifications, **H/EPB agreed** and signed the revised list of computer equipment (see **Annex 7**).

5.2 Contact persons

H/EPB and NIVA revised the provisional list of project organisation. The revised version is at **Annex 8**.

5.3 Adoption of the Summary report of NIVA's February-March 97 visit to Harbin

By signing this report, Ms Bente Wathne (NIVA) and Mr Guo Yuan, Division Chief (H/EPB) agree:

- that the report is a fair summary of the work carried out during NIVA's February-March 97 visit to Harbin;
- on the content of the summary report and the various commitments therein.

Beijing 5 March 1997

Ms Bente Wathne, NIVA

Mr Guo Yuan H/EPB

AGENDA FOR NORWEGIAN VISITORS IN HARBIN

DATE	TIME	PLACE	ACTIVITIES	PATICIPANTS
Feb. 25th Tue.	16:50 18:00 18:30	Airport Swan Hotel Restaurant	Meet the Norwegian visitors Make accomodations for the visitors Have a dinner	Mr. Guo Yuan, Mr. Chen Yong Same as above plus 3 visitors Same as above
Feb. 26th	09:00 09:15 12:00 13:30 18:00	Meeting room Same as above Dining H. Meeting room Restaurant	The directors of H/EPB greet the Norwegian visitors 1.Review of the project progress 2.Reconfirm the numbers and sites for the on-line water quality station 3.Reconfirm the adjustment of funds Have a working lunch 1.Clarify the time and numbers of people to visit Norway 2.Discuss about annexes to the Contract 3.Reconfirm deadlines for the tasks in 1997 H/EPB invite the Nor visitors for dinner	Mr. Li Weixiang Chief, Mr. Wang Jingchun Deputy Chief, visitors Mr. Wang Jingchun, Mr. Guo Yuar, Mr.Chen Aifeng, Ms.Wu Yue Hui Mr.Chen Jiahou, Mr.Chen Yong 3 Norwegian visitors Same as above Same as above Same as above

DATE	TIME	PLACE	ACTIVITIES	PARTICIPANTS
Feb. 27th Thur.	09:00	Meeting room	1. Discuss about on-line station & mobile station for water quality item by item 2. Discuss about the mobile station for air quality item by item	Same as those yesterday
	12:00	Dining H.	Have a working lunch	Same as above
	13:30	Meeting room	1. Discuss about the information tech. item by item	
	17:30		The meeting for today is over	
Feb. 28th Fri.	09:00	Meeting room	Mr. Li Weixiang Chief of H/EPB greet the representatives from Norwegian Embassy and NORAD	Mr. Li Weixiang, Mr. Wang Jingchun, Mr. Guo Yuan, Mr. Chen Aifeng etc. the Norwegian visitors from NIVA, the official representatives
	10:00	Meeting room	Discuss about data and informations	Same as those yesterday
	13:30	Same as above	1. Continue the morning discussion 2. Review of the issues discussed during the past two days	
	17:30	Swan Hotel	Ms. Ma Vice Governor invites the Norwegian guests for a banquet	Ms. Ma Shujie vice governor Ms. Li Xiangjia, Mr. Wang Jungchun the leaders from II/SSSTC

DATE	TIME	PLACE	ACTIVITIES	PATICIPANTS
Mar. 1st Sat.	09:00 12:00 13:30 17:30	Meeting r. Dining H Meeting r.	Discussing about the details Have a working lunch Go on discussing The discussion for today is over	Same as the working group Same as above
Mar. 2nd Sun.	09:00 11:30 18:00	Meeting r. Harbin Swan Hotel	Exchange comments for the minutes of the workshop Go sightseeing and shopping Send 3 Nor. visitors back to the hotel	Same as above Mr. Chen Yong and 3 Nor. visitors
Mar. 3rd Mon.	10:00 12:00 16:30 17:50	Meeting r. Dining H. H/EPB Airport	Finalise the minutes for the workshop and make workshop report Have a working lunch Head for the Airport 3 Nor. visitors fly to Beijing	Same working group Same as above, Mr. Li Chief shows up Mr. Guo Yuan, Mr. Chen Yong 3 Nor. visitors

ANNEX 2

ANNEX TO THE CONTRACT

between

**THE NORWEGIAN INSTITUTE FOR WATER RESEARCH
(NIVA),
NORWAY**

and

**HEILONGJIANG ENVIRONMENTAL PROTECTION BUREAU
(H/EPB),
CHINA**

regarding

**Surveillance of Water Quality in the Songhua River, Heilongjiang
Province, China (“the Project”)**

The following formulations in the contract between HEPB and NIVA, of 21 November 1996 (NORAD Project no. CHN 017) are hereby modified as stated below:

- Section 3.1, after the last bullet point.

The following shall be added as a new bullet point:

“make sure the Norwegian personnel is properly insured to cover possible liabilities and damage that might occur during their stays in China”.

- Statement in Section 6.1

“6.1 NIVA can submit requests for payments from the Grant as follows:”

is changed to:

“6.1 The annual amounts to be used for the project from the Grant are as follows:”.

ANNEX 3

Songhua River System - Water Quality Instrumentation Package

The three fully equipped monitoring stations and the two monitoring stations with reduced equipment will be equipped with the following:

- **5 Ammonia analyser**
with automatic calibration pump,
chemical cleaning and sample heater
- **3 Nitrate analyser**
with automatic calibration pump, ion selective electrode,
chemical cleaning and sample heater
- **2 TOC analyser**
Auto-cleaning, Auto call and Stainless
steel continuous liquid sample filtration unit
- **1 COD analyser**
- **5 dissolved oxygen analyser**
Complete with immersion probe
- **5 turbidity measurements 0 - 100 NTNU.**
Complete with WP 320 self cleaning
turbidity sensor and mounting kit.
- **5 pH/temperature measurement**
2 channel pH transmitter complete with pH probe
Pt 100 temp element, Flow through housing and connecting kit
- **5 conductivity measurement**
Complete with conductivity sensor, flow through chamber
and cable with connector
- **Mounting**
pH/temp, conductivity dissolved oxygen and turbidity. These
instruments are mounted on a panel with all the necessary tubings, wiring and with automatic
cleaning devices if necessary. The panels will be specially made for this project.
- **Support**
The price includes 2 weeks technical assistance for the commissioning of the analysers on site
(China) by Zellwegger Analytics Application chemist
- **Spare parts for 2 years**
See Spare part list in fax from NIVA/ABB: Water Quality Monitoring - Parts and
instrumentations list.

First bullit, Statement:

“present Agreement”

is changed to:

“present Contract”.

- Statement under 6.1, third bullet point:

“The request for the second and third year of the Project...”

is changed to:

“The amounts for the second and third year of the Project...”.

- Statement under Section 6.2:

“with standard Norwegian rates and” is deleted.

- Section 6.2, start of first bullit:

“The following hourly rates shall be used for the categories of Norwegian personnel:

For research scientists : NOK 630,-

For engineers and research assistants : NOK 490,-

For technical assistants : NOK 360,-.

One week consists of 42 working hours.

- Contract. Section 7:

The following statements shall be added:

“Progress and status reports to be produced under each Task of the Project shall be specified, including which partner is responsible for producing them, in the annual Detailed Work Plans.”

“The language of the reports shall be English. If translation of reports is necessary, this shall be taken care of by the Chinese partners.”

- List of Annexes

The Project Proposal: “Surveillance of Water Quality in the Songhuajiang River System in Heilongjiang Province,P. R. of China”, dated January 1996.

Place and date

Place and date

For Heilongjiang Environmental
Protection Bureau (H/EPB)

For Norwegian Institute for Water
Research (NIVA)

Quote for the Songhua River System - Water monitoring equipment					
5 complete instrumentation packages	NOK	1,726,000			
5 dataloggers	NOK	120,000			
5 filters	NOK	89,000			
2 pumps 6 kg. 30 l/min	NOK	13,000			
8 pumps 1,5 kg 20 l/min	NOK	32,000			
1000 m electrical cable	NOK	27,000			
1000 m rubber tubing 25 mm/34mm	NOK	35,000			
12 water taps	NOK	7,000			
5 batteries with charger and converter	NOK	53,000			
5 compressors with tube	NOK	10,000			
fittings	NOK	5,000			
2 water level sensors 0 - 10 m	NOK	13,000			
Total	NOK	2,130,000	2,130,000		
*Trailer	NOK	250,000			
ISCO sampler	NOK	50,000			
Total	NOK	300,000	300,000		
Total for water quality monitoring equipment with trailer ex. tax					
	NOK		2,430,000		
Tax (suggested) 1,5 % results in	NOK	2,467,000			
	approx. NOK		2,500,000		
Available funds for adjustment procedures					
Originally budget for water quality monitoring	NOK	3,900,000			
Revised budget	NOK	2,500,000			
Budget available for adjustments	NOK	1,400,000			
Agreed tasks prioritised for funding within the budget					
*Motor vehicle for transport of trailer	NOK	500,000			
Supplementary funds for air monitoring unit	NOK	200,000			
Supplementary funds for 2 extra Chinese experts to go to Norway for training	NOK	70,000			
Extra man hours on Norwegian side to cover this	NOK	30,000			
*Long-range communication in Harbin	NOK	100,000			
Norwegian travel expences, 1 person to 3 annual consultancy meetings in Beijing	NOK	90,000			
**Purchase of hydrological data	NOK	140,000			
Local expences in China for visitor arrangements	NOK	50,000			
*Purchase of population data	NOK	20,000			
**Investigate and provide/purchase information on local use of pesticides and fertiliser	NOK	25,000			
**Investigate and provide information on agricultural land use	NOK	35,000			
*Work out digital maps	NOK	40,000			
Possible redcuton in discount from instrument prducer/Other expences	NOK	100,000			
Total	NOK	1,400,000			
* = Items to be purchased under the responsibility of the Chinese side, including quote and other reelevant issues.					
** = Items to be purchased to order procedures/determined jointly by NIVA and HEPB.					
The Chinese side expresses a wish that funds saved form the budget may be prioritised to cover supplementary expences in China for visiting Norwegian scientists.					

Data Requirements

Explanation to data requirements on:

1. Land coverage
2. User interests
3. Industrial point sources

The fulfilment of the commitments made by the Chinese side is subject to the availability of the data required.

1. Land coverage

H/EPB agreed to submit to NIVA a map with information about the land coverage in the Songhua River system catchment area by 1 May 1997. A detailed description and an explanation are given in annex 6.1.

2. User interests

2.1 Maps

H/EPB agreed to submit to NIVA a map with information about the user interests in the Songhua River System catchment area by 1 May 1997 (see also Annex 6.2). This information should comprise the following user interests:

- Drinking water including overview of points for withdrawal
- Irrigation;
- Water supply for quality demanding industry (e.g. foodprocessing, pharmaceutical)
- Recreation including swimming;
- Fishing, divided into "leisure fishing", commercial fishing and fish-farming;
- Protected (landscape and animals)
- Groundwater sources
- Others, to be specified.

The information should be marked with a line on the map according to the colour code specified in annex 6.2. In cases where the extent of the user interest on the map correspond to a length of less than 10 km, this should be marked with a dot according to the same color code, and the exact length should be specified on a separate sheet.

3. Industrial point sources

See Annex 6.3

Information needed to describe Land Coverage in the catchment of the Yia hua River System

Proposed deadline: 1 May 1997

Main Type	Sub Type	Description	Map Reference	Legend
Agricultura I Area				
	<i>Farm land (crop production)</i>	Indicate areas with crop production on a map (preferably categorized on the "catchment area map", but if difficult on the "statistical unit map" Give a verbal description of what type of crop that are produced within the areas on a separate page and if possible the percentage of each crop. The size of the area should be given in km ² . The areas shall be marked with a map reference code, and this must be used as a reference in the verbal description.	The areas shall be marked with the letter AF and accompanied with a number 1,2,3,4 etc.	
	<i>Grazing land, (meadow)</i>	Indicate areas with grazing land (preferably categorized on the "catchment area map", but if difficult on the "statistical unit map" Give a verbal description/comments (if any) on a	The areas shall be marked with the letter AG and accompanied with	

		separate page. The size of the area should be given in km ² . The areas shall be marked with a map reference code, and this must be used as a reference in the verbal description.	a number 1,2,3,4 etc.	
Forest		Indicate areas covered with forest on the map, (preferably categorized on the "catchment area map", but if difficult on the "statistical unit map"). Give a verbal description/comments (if any) on a separate page. The size of the area should be given in km ² . The areas shall be marked with a map reference code, and this must be used as a reference in the verbal description.	The areas shall be marked with the letter F and accompanied with a number 1,2,3,4 etc.	
Non Cultivated Areas	<i>(e.g mountain areas, marshes,)</i>	Indicate non productive areas on the map, (preferably categorized on the "catchment area map", but if difficult on the "statistical unit map"). Give a verbal description/comments (if any) on a separate page. The size of the area should be given in km ² . The areas shall be marked with a map reference code, and this must be used as a reference in the verbal description.	The areas shall be marked with the letter NP and accompanied with a number 1,2,3,4 etc	
Main Cities		Indicate the areas of the main cities in the catchment on a map, (preferably categorized on the "catchment area map", but if difficult on the "statistical unit map"). Give a verbal description/comments (if any) on a separate page. The size of the area should be given in km ² . The areas shall be marked with a map reference code, and this must be used as a reference in the verbal description.	The areas shall be marked with the letter NP and accompanied with a number 1,2,3,4	

<p>Water Surface</p>	<p><i>Rivers</i></p>	<p>Indicate rivers in the Yia River System on a map which shows the catchment and subcatchments of Yia River Systems. Calculate the surface area of the river in the three season: 1) dry season, 2) normal season, and flood season. The size of the surface area of the river should be given in km². Give a verbal description/comments (if any) on a separate page, and use the map reference code in this description.</p>	<p>The codes shall correspond to the code given for the subcatchment.</p>	
	<p><i>Lakes</i></p>	<p>Indicate lakes in the Yia River System on the same map which shows catchment and subcatchments. Calculate the surface area of the lakes. The size of the area should be given in km². Give a verbal description/comments (if any) on a separate page. The areas shall be marked with a map reference code, and this must be used as a reference in the verbal description.</p>	<p>The codes shall correspond to the code given for the subcatchment. Accompanied with numbers 1, 2, 3, 4....</p>	

Information required to describe User Interests in the catchment of Yia River System

Deadline: 1 May 1997

User Interest	Description	Map Reference	Legend
Drinking water, including overview of points for abstraction	<ul style="list-style-type: none"> On the user interest map, indicate the locations of drinking water supply water abstraction; On a separate page, specify the amount of water abstracted, using the same reference code as on the map. Specify if the water from the drinking water abstraction is used for other purposes as well such as industry, irrigation etc. 	The drinking water abstraction should be marked with the letter code DW, should be followed a number 1,2,3...etc.	
Water supply for quality demanding industry (e.g. food-processing, pharmaceutical)	<ul style="list-style-type: none"> On the user interest map, indicate the location of the water outlet to the industrial plants; On a separate page, specify the amount of water abstracted, using use the same reference code as on the map. 	The water supply for industrial plants should be marked with the letter code IW, followed by a number 1,2,3...etc.	

<p>Irrigation</p>	<ul style="list-style-type: none"> • On the user interest map, indicate the location of the outlet for irrigation. • On a separate page specify the amount of water abstracted, using the same reference code as on the map • Specify the main type of crop the water is used for. 	<p>The water supply for irrigation should be marked with the letter code IW followed by a number 1,2,3...etc.</p>	
<p>The water supply for irrigation should be marked with the letter code IW, followed by a number 1,2,3...etc.</p>	<ul style="list-style-type: none"> • Indicate the location of abstraction from groundwater wells. • On a separate page, specify the amount of water abstracted, using the same reference code as on the map. • Specify the use of the water. 	<p>The water supply from groundwater wells should be marked with the letter code GW, followed by a number 1,2,3...etc.</p>	
<p>Recreation, including swimming</p>	<ul style="list-style-type: none"> • Indicate the stretches of the river that are used for recreational purposes. • Locations used for swimming should be marked with a dot. • On a separate page, specify the type of recreation, using the same reference code as on the map 	<ul style="list-style-type: none"> • Recreational sites should be marked with the letter code R, followed by a number 1,2,3...etc. • The swimming sites should be marked with the letter code RS, followed by a number 1,2,3 ... 	

<p>Fishing, divided into “leisure fishing”, commercial fishing and fish-farming;</p>	<ul style="list-style-type: none"> Indicate the stretches of the river that are used for: <ol style="list-style-type: none"> leisure fishing; commercial fishing; fish-farming. On a separate page, quantify the catches by using the same reference code as on the map 	<ul style="list-style-type: none"> Leisure fishing should be marked with the letter code FR, followed by a number 1,2, 3..etc. Commercial fishing should be marked with the letter code FC, followed a number 1,2,3 ... The fish farming locations should be marked the letter code FF, followed by a number 1, 2,3,... 	
<p>Protected Areas (landscape and animals)</p>	<ul style="list-style-type: none"> Indicate the stretches of the river adjacent to protected areas. Indicate the location of the protected areas On a separate page, describe the type of protected area and other relevant information by using the same reference code in the description as on the map. 	<p>The stretches of the river should be marked with the letter code PA, followed by a number 1,2, 3..etc.</p>	
<p>Others, to be specified</p>	<p>Please provide information about other relevant user interest information</p>		

Data requirements for discharges from industrial point sources

Data group	Data	Description	Timeframe
Phase 1			15 March 1997 for the main industrial activities (about 70) 1 May 1997 for the remaining industrial activities (about 400)
General Information			
	Name in Chinese	Please provide the name of the industrial plant in Chinese	
	Name pin yin	Please provide the name of the industrial plant in pin yin	
	Location	The location of the industrial plants should be given on "the overview map".	
	Type of Industry	Please indicate the type of industrial activity	
Recipient			
	Primary Recipient	Please provide the name of the primary recipient into which the outlet from the industrial activities is discharged	

Data group	Data	Description	Timeframe
Phase 2			1 July 1997
Sewer Network		Please indicate if the process water is discharged: <ul style="list-style-type: none"> • into sewer system for treatment • into sewerage without treatment and subsequently into a freshwater recipient • directly into a freshwater recipient. 	
Discharges			
	Water flow	Please provide the figures for the quantities of water from each production step	
	Pollution parameter	Please provide the list of pollution parameters which are measured, if different from the parameters in the database, as well as information about the values measured	
Discharge permits		Please provide information about discharge permits and procedures for routine inspections	
Phase 3			1 September 1997
Waste water treatment plant for the industry	Treatment processes	Please describe the treatment processes for treating the waste water from industry If possible, draw a flow diagram.	
	Treatment efficiencies	Please provide the overall treatment efficiencies for the different substances measured	
	Hydraulic load	Please provide the quantity of water treated at the waste water treatment plant	
	Hydraulic capacity	Please provide the figure of waste water flow for which the waste water treatment plant is designed	
Production			
	Raw material	Please indicate the type and amount of raw material used in the production process	
	End products	Please describe the type and amount of products produced	
	Bi products	Please describe the type and amount of byproducts from the production process	

	Production lines	Please describe the production processes and the production lines (technology used) If possible, draw a flow diagram	
Pollution parameters	Waterflow	Please provide the figures of the amount of water from each production line	
Phase 4		To be specified at a later stage	1998

NORGIT-Senteret AS
Bryggeriveien 2
Postboks 229
1601 FREDRIKSTAD
Att: Torstein Skancke

Oslo, 21.02.97

CONTRACT FOR DELIVERY OF NORAD/CHINA PROJECT

The undersigned parties agree to the following conditions for the delivery of the defined computer systems to the NORAD/CHINA project.

The deliverables committed under this contract are specified entirely in the attached tenders number 2896-S10-K10 and 2897-S10-K10 (Server components) and 2898-S10-K10 and 2899-S10-K10 (PC/Workstation components). Additional components are do not fall under the price- and delivery conditions specified in this contract, but must be specified in a separate contractual document.

DanoTech Oslo AS (the supplier) will deliver to buyers representative (NORGIT) the aforementioned deliverables at the specified address in Fredrikstad, Norway, under the INCOTERMS 1990 freight condition of DDP (Delivered Duty Paid). Delivery will be completed in accordance with requirements set forth by NORGIT in order to meet the delivery deadline of April 1, 1997 in China.

Warranties and support options are the sole responsibility of Hewlett-Packard Corporation, in accordance with the terms and conditions set forth in the attached tenders. This tender assumes that the end-user contacts Hewlett-Packard locally to sign the appropriate on-site support agreement. The attached tender includes no local support and warranty other than the product's standard warranty.

China Hewlett-Packard Co Ltd.
5-6 Floor - West Wing Office
World Trade Center 1Jian Guo Men Wai Av.
Beijing
P.R. China

Terms of payment shall be 20 days from invoice date, which is set to April 1, 1997. Default in payment shall result in interest being invoiced in accordance with "morarenteloven".

In the event of contractual disagreements as to the scope and fulfillment of this delivery, norwegian law shall have precedence. Any and all disagreements shall be resolved within the norwegian legal system and in accordance to norwegian law.

Date:

Date:

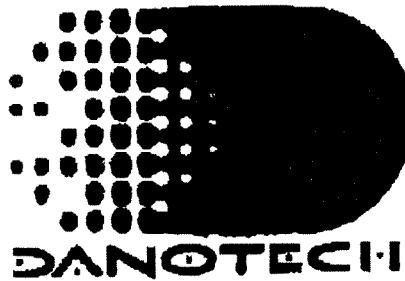
on behalf of the supplier,
DanoTech Oslo as


on behalf of the buyer,

Peter Horup
Sales Director

TELEFAX

DanoTech Oslo as
Hoffsvejen 17
0275 Oslo
Telefon: 22 50 22 50
Telefax: 22 50 22 11



Til : NORGIT-Senteret AS
Att. : Torstein Skancke
Faxnr. : 69 39 49 10
Fra : Peter Horup
Dato : 21.02.97
Subject : Ref. telefonsamtale og faks 21.02.1997
Antall sider. : 1  inkl. denne

Ref. telefonsamtale og faks 21.02.1997

Viser til tidligere faks i dag og samtale kl 10:16.

De to stednavn er opplyst til at være YanTai og Heilongjiang. Håber jeg har stavet dem riktig.

Har sat op 3 stk. 21" skærme på YanTai PC-ordren som oprindeligt. Dette betyder at kun en af de 8 PC'er leveres uden skærme.

Grundet garantien i Kina skaber utfordringer mellem Hewlett-Packard Norge AS og den lokale Hewlett-Packard organisation i Kina foreslår vi at dere bruger følgende model

Hewlett-Packard i Kina ønsker at garanti og support tegnes direkte mellem Hewlett-Packard i Kina og NORGIT's slutkunde i Kina. Dette grundet politik, tradidoner osv. og fordi de mener at det bliver for kompliseret at både dere, DanoTech Oslo as og Hewlett-Packard Norge AS skal være en aktiv partner i denne aftale. For at sige det i klar tekst fik vi i vores samtale med Hewlett-Packard i Kina direkte besked om at drag dit p..... gror da dette var en kinesisk sag.

Iht. vores samtale i dag har jeg derfor fjerner de support og garanti optioner som var tilbudt dere. Dette betyder at NORGIT's slutkunde må tegne en direkte aftale med Hewlett-Packard i Kina. Dette må dere sikker i kontrakten med slutkunden at i forudsætter at denne gennemfører en lokal aftale så de ikke kan komme tilbage til dere med diverse klager

Alle tidligere tilbud baseret på tilbud/ordre nr. 2605 og 2606 er annulleret. Nye ordrbekræftelse er vedlagt denne faks med følgende ordre nr. 2896 / 2897 / 2898 / 2899

Jeg trænger en nu bestilling fra dere som er rette mod de 4 ovenstående nr. Kan du sende mig den i løbet af dagen.

Venlig hilsen
DannTech Oslo AS



Peter Borup
Sælger

Ordrebekreftelse

2899-S10-K10



Kundenavn: **NORGIT-Senteret**
Bryggeriveien 2
Postboks 229
1602 FREDRIKSTAD
Att: **Torstein Skancke**
Fax: **69 39 49 10**

Lev. adresse: **NORGIT-Senteret**
Bryggeriveien 2
1602 FREDRIKSTAD
Att: **Torstein Skancke**
Merkes: **YanTai - Kina**

Fak. adresse: **NORGIT-Senteret**

DanoTech Oslo as
Hoffsveien 17
0275 OSLO

Telefon hovedkontor: **22 50 22 50**
Telefax hovedkontor: **22 50 22 11**

Kundenummer: **10160**
Ordrebekr. nr: **2899**
Ordrebekr. dato: **21.02.97**
Forventet lev. dato: **01.04.97**
DanoTech's ref.: **Peter Horup**
Deres ref.: **Torstein Skancke**
Deres rek.: **YanTai - Kina**
Side: **3**

Produktbeskrivelse	Ant.	Pris pr. enhet	Rabatt %	Beløp	Vår forventet lev. dato
HP original warranty					
MS Workstation 4.0 Uppg. fra 3.x CD-ROM versjon	4	912,00		3 648,00	01.04.97
Drop cable 18 meters TP / 10base-T All cables supplied are factory inspected to 100Mbit standard. All cables manufactured in Germany.	4	385,00		1 540,00	01.04.97
Consultancy - Monitor calibration and setting Estimated time calibration time pr. monitor is 15 min. Prerequisite is that all calibration and setup is carried out at DanoTech's offices in Oslo, Norway.	4	162,50		650,00	01.04.97
HP DeskDirect 10/100TX PCI Fast 100 Mbit LAN Adapter	4	1 045,00		4 180,00	01.04.97
				33 249,72	
23 % mva av 144 564,00				177 813,50	
Ordresum					

Leveringsbetingelser:
Leveringsmåte:
Betalingsbetingelser:
Salgsbetingelser:

Alle fraktkostnader belastes kunden
Budbil - Normal levering
Netto pr. 10 dager
Skal være vedlagt denne ordrebekr. Hvis ikke må dette opplyses salger umiddelbart etter mottak av ordrebekr.

Med vennlig hilsen
DanoTech Oslo as

Peter Horup
Daglig leder

Malladresse: peter.horup@danotech.no



Ordrebekreftelse

2898-S10-K10



Kundenavn: NORGIT-Senteret
 Bryggeriveien 2
 Postboks 229
 1602 FREDRIKSTAD

Att: Torstein Skancke
Fax: 69 39 49 10

Lev. adresse: NORGIT-Senteret
 Bryggeriveien 2
 1602 FREDRIKSTAD

Att: Torstein Skancke
Merkes: Heilongjiang - Kina

Fak. adresse: NORGIT-Senteret

DanoTech Oslo as
 Hoffsvieien 17
 0275 OSLO

Telefon hovedkontor: 22 50 22 50
Telefax hovedkontor: 22 50 22 11

Kundennummer: 10160
Ordrebekr. nr: 2898
Ordrebekr. dato: 21.02.97
Forventet lev. dato: 15.02.97
DanoTech's ref.: Peter Horup
Deres ref.: Torstein Skancke
Deres rek.: Heilongjiang - Kina
Side: 1

Produktbeskrivelse	Ant.	Pris pr. enhet	Rabatt %	Beisp	Vår forventet lev. dato
SUPERUSER WORKSTATIONS FOR CHINA					
HP Vectra XA Pentium Pro 200 Model 2500/32MB	3	20 250,00		60 750,00	15.02.97
<ul style="list-style-type: none"> * Pentium 200 MHz processor (can be upgraded to dual 200) * 64 bit PCI local bus architecture * 7.5 GB IDE Fast hard disk (9 ms - 5200 rpm) * 256 KB Synchronous Cache write-back * 2 MB Video-RAM (max upgrade 8 MB Video-RAM) * 64 bit PCI Matrox Millennium Plus graphics card * IDE CD-ROM 4-pin and Audio 16-bit * Pre-installed Windows NT 3.51 Workstation, English ver. * 3 year warranty - First year on-site * Tower Model enclosure 					
HP 32 MB EDO SIMM Accessory kit (2X16MB)	3	2 650,00		7 950,00	15.02.97
All workstations are delivered with 64 MB RAM					
Matrox Millennium 6MB VRAM upgrade	3	2 159,00		6 477,00	15.02.97
All workstations are delivered with 8 MB VideoRAM					
XX					
STANDARD WORKSTATIONS FOR CHINA					
HP Vectra VL4 Pentium 133 Model 1250/16MB	1	8 990,00		8 990,00	15.02.97

Leveringsbetingelser: Alle fraktkostnader belastes kunden
Leveringsmetode: Budbil - Normal levering
Betalingsbetingelser: Netto pr. 30 dager
Salgsbetingelser: Skal være vedlagt denne ordrebekr. Hvis ikke må dette opplyses selger umiddelbart etter mottak av ordrebekr.



Ordrebekreftelse

2898-S10-K10



Kundenavn: NORGIT-Senteret
 Bryggeriveien 2
 Postboks 229
 1602 FREDRIKSTAD

Att: Torstein Skancke
Fax: 69 39 49 10

Lev. adresse: NORGIT-Senteret
 Bryggeriveien 2
 1602 FREDRIKSTAD

Att: Torstein Skancke
Merkes: Heilongjiang - Kina

Fak. adresse: NORGIT-Senteret

DanoTech Oslo as
 Hoffsveien 17
 0275 OSLO

Telefon hovedkontor: 22 50 22 50
Telefax hovedkontor: 22 50 23 11

Kundenummer: 10160
Ordrebekr. nr: 2898
Ordrebekr. dato: 21.02.97
Forventet lev. dato: 15.02.97
DanoTech's ref.: Peter Horap
Deres ref.: Torstein Skancke
Deres rek.: Heilongjiang - Kina
Side: 3

Produktbeskrivelse	Ant.	Pris pr. enhet	Rabatt %	Beløp	Vår forventet lev. dato
HP original warranty					
MS Workstation 4.0 Upg. fra 3.1 CD-ROM version	4	912,00		3 648,00	15.02.97
Drop cabel 10 meters TP / 10base-T All cables supplied are factory inspected to 100Mbit standard. All cables manufactured in Germany.	4	385,00		1 540,00	15.02.97
Consultancy - Monitor calibration and setting Estimated time calibration time pr. monitor is 15 min. Prerequisite is that all calibration and temp is carried out at DanoTech's offices in Oslo, Norway.	4	162,50		650,00	15.02.97
HP DiskDirect 10/100TX PCI Fast 100 Mbit LAN Adapter	4	1 045,00		4 180,00	15.02.97
Incoming freight charges for Monitors	1	500,00		500,00	15.02.97
Incoming freight charges for various add-on	1	250,00		250,00	15.02.97
Incoming freight	1	650,00		650,00	15.02.97
Freight insurance for DDP delivery	1	798,00		798,00	15.02.97
Complete delivery DDP to NORGIT in Fredrikstad Delivery via express carrier	1	1 950,00		1 950,00	15.02.97
				31 456,41	
23 % mva av 136 767,00					

Leveringsbetingelser:
 Leveringsmetode:
 Betalingsbetingelser:
 Salgsbetingelser:

Alle fraktkostnader belastes kunden
 Budbil - Normal levering
 Netto pr. 30 dager
 Skal være vedlagt denne ordrebekr. Hvis ikke må dette opplyses selger umiddelbart etter mottak av ordrebekr.



Ordrebekreftelse

2898-S10-K10



Kundenavn: NORGIT-Senteret
Bryggeriveien 2
Postboks 229
1602 FREDRIKSTAD
Att: Torstein Skancke
Fax: 69 39 49 10

Lev. adresse: NORGIT-Senteret
Bryggeriveien 2
1602 FREDRIKSTAD
Att: Torstein Skancke
Merkes: Heilongjiang - Kina

Fak. adresse: NORGIT-Senteret

DanoTech Oslo as
Hoffsveien 17
0275 OSLO

Telefon hovedkontor: 22 50 22 50
Telefax hovedkontor: 22 50 22 11
Kundennummer: 10160
Ordrebekr. nr: 2898
Ordrebekr. dato: 21.02.97
Forventet lev. dato: 15.02.97
DanoTech's ref.: Peter Horup
Deres ref.: Torstein Skancke
Deres rek.: Heilongjiang - Kina
Side: 4

Produktbeskrivelse	Ant.	Pris pr. enhet	Rabatt %	Beløp	Vår forventet lev. dato
Ordresum				168 223,50	

Leveringsbetingelser:
Leveringsmetode:
Betalingsbetingelser:
Salgsbetingelser:

Alle fraktkostnader belastes kunden
Budbil - Normal levering
Netto pr. 30 dager
Skal være vesilagt denne ordrebekr. Hvis ikke må dette
applieses selger umiddelbart etter mottak av ordrebekr.

Med vennlig hilsen
DanoTech Oslo as

Peter Horup
Daglig leder

Mailadresse: peter.horup@danotech.no



Ordrebekreftelse

2897-S10-K10



Kundenavn: NORGIT-Senteret
 Bryggeriveien 2
 Postboks 229
 1602 FREDRIKSTAD

Att: Torstein Skancke
Fax: 69 39 49 10

Lev. adresse: NORGIT-Senteret
 Bryggeriveien 2
 1602 FREDRIKSTAD

Att: Torstein Skancke
Merkes: YanTai - Kina

Fak. adresse: NORGIT-Senteret

DanoTech Oslo as
 Hoffsvveien 17
 0275 OSLO

Telefon hovedkontor: 22 50 22 50
Telefax hovedkontor: 22 50 22 11

Kundenummer: 10160
Ordrebekr. nr: 2897
Ordrebekr. dato: 21.02.97
Forventet lev. dato: 01.04.97
DanoTech's ref.: Peter Horup
Deres ref.: Torstein Skancke
Deres rek.: YanTai - Kina
Side: 1

Produkteskrivelse	Ant	Pris pr. enhet	Rabatt %	Beløp	Vår forventet lev. dato
HP NetServer Pentium 200 LH Pro Dual - Model 1/64MB Includes two (2) 200 MHz pentium processors	1	58 000,00		58 000,00	01.04.97
• Intel DUAL 200 MHz Pentium processor					
• 64 bit PCI local bus architecture					
• Non disk					
• Dual Fast PCI SCSI-II controller (+ external port) and IDE					
• 512 KB Cache write-back					
• CD-ROM drive 8-spin SCSI					
• Super VGA graphics controller					
• 4 PCI slot / 1 combo PCI/EISA / 3 EISA slot					
• 3 half-height mass storage shelves					
• 3 year on-site warranty					
HP 4.2GB Hot Swap Ultra SCSI Harddisk Drive Includes 12 GB SCSI Fast & Wide disk storage capacity	3	9 600,00		28 800,00	01.04.97
HP 64 MB 60ns DIMM Accessory for HP NetServer LH Plus Includes a total of 128 MB ECC RAM	2	5 600,00		11 200,00	01.04.97
HP DeskDirect 10/100TX PCI Fast 100 Mbit LAN Adapter	2	1 045,00		2 090,00	01.04.97
HP 17" Ultra VGA monitor 1280*1024 Dpi	1	4 990,00		4 990,00	01.04.97
Drop cable 10 meter TP / 10base-T	1	385,00		385,00	01.04.97

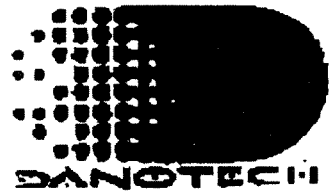
Leveringsbetingelser:
Leveringsmetode:
Betalingsbetingelser:
Salgsbetingelser:

Alle fraktkostnader belastes kunden
 Budbil - Normal levering
 Netto pr. 30 dager
 Skal være vedlagt denne ordrebekr. Hvis ikke må dette opplyses selger umiddelbart etter mottak av ordrebekr.



Ordrebekreftelse

2897-S10-K10



Kundenavn: NORGIT-Senteret
 Bryggeriveien 2
 Postboks 229
 1602 FREDRIKSTAD
 Att: Torstein Skancke
 Fax: 69 39 49 10

Lev. adresse: NORGIT-Senteret
 Bryggeriveien 2
 1602 FREDRIKSTAD
 Att: Torstein Skancke
 Merkes: YanTai - Kina

Fak. adresse: NORGIT-Senteret

DanoTech Oslo as
 Hoffsvaien 17
 0275 OSLO

Telefon hovedkontor: 22 50 22 50
 Telefaks hovedkontor: 22 50 22 11

Kundenummer: 10160
 Ordrebekr. nr: 2897
 Ordrebekr. dato: 21.02.97
 Forventet lev. dato: 01.04.97
 DanoTech's ref.: Peter Horup
 Deres ref.: Torstein Skancke
 Deres rek.: YanTai - Kina
 Side: 2

Produktbeskrivelse	Ant.	Pris pr. enhet	Rabatt %	Beløp	Vår forventet lev. dato
Consultancy - Installation & Implementation Installation of HOT-swap disks Prerequisite for quote is that all installation and testing is performed at DanoTech's office in Oslo, Norway	2	650,00		1 300,00	01.04.97
Consultancy - Installation & Implementation Installation and testing of RAM is estimated at 20 min. Prerequisite for quote is that all installation and testing is performed at DanoTech's office in Oslo, Norway	1	216,00		216,00	01.04.97
Consultancy - Installation & Implementation Installation and testing of 10/100 Mbit network adapter Prerequisite for quote is that all installation and testing is performed at DanoTech's office in Oslo, Norway	1	162,50		162,50	01.04.97
MS Windows NT Server 4.0 (Eng.) - 10 clients	1	7 990,00		7 990,00	01.04.97
MS Windows NT Server Resource Kit	1	1 295,00		1 295,00	01.04.97
HP SureStore Tape 6000i 8 GB internal DAT This unit has a maximum capacity of 16Gb compressed	1	6 495,00		6 495,00	01.04.97
Moulding kit for 5.25" Tape/DAT/CD-ROM for HP NetServer	1	647,00		647,00	01.04.97
HP 4 mm data tape, DDS-DAT-cassette, 120 m, 4.0 GB Includes a total of 15 4mm DAT tapes	3	685,00		2 055,00	01.04.97
Cheyenne ARCserver 6.00 Enterprise for Win NT Server	1	5 750,00		5 750,00	01.04.97

Leveringsbetingelser:
 Leveringsmåte:
 Betalingsbetingelser:
 Salgsbetingelser:

Alle fraktkostnader belastes kunden
 Budbil - Normal levering
 Netto pr. 30 dager
 Skal være vanligst denne ordrebekr. Hvis ikke må dette opplyses selger umiddelbart etter mottak av ordrebekr.



Ordrebekreftelse

2897-S10-K10



Kundenavn: NORGIT-Senteret
 Bryggeriveien 2
 Postboks 229
 1602 FREDRIKSTAD
Att: Torstein Skancke
Fax: 69 39 49 10

Lev. adresse: NORGIT-Senteret
 Bryggeriveien 2
 1602 FREDRIKSTAD
Att: Torstein Skancke
Merkes: YanTai - Kina

Fak. adresse: NORGIT-Senteret

DanoTech Oslo as
 Hoffsvveien 17
 0275 OSLO

Telefon hovedkontor: 22 50 22 50
Telefax hovedkontor: 22 50 22 11

Kundenummer: 10160
Ordrebekr. nr: 2897
Ordrebekr. dato: 21.02.97
Forventet lev. dato: 01.04.97
DanoTech's ref.: Peter Horup
Deres ref.: Torstein Skancke
Deres rek.: YanTai - Kina
Side: 3

Produkteskrivelse	ANT	Pris pr. enhet	Rabatt %	Beløp	Vår forventet lev. dato
Consultancy - installasjon & implementasjon Installation & testing of DAT estimated at 1 hour Prerequisite for quote is that all installation and testing is performed at DanoTech's office in Oslo, Norway	1	650,00		650,00	01.04.97
Consultancy - installasjon & implementasjon Installation & testing of ARCserve estimated at 2 hours Prerequisite for quote is that all installation and testing is performed at DanoTech's office in Oslo, Norway	2	650,00		1 300,00	01.04.97
HP PowerWise UPS 3100 VA Battery Pack	1	3 090,00		3 090,00	01.04.97
HP PowerWise 3100 VA UPS	1	7 250,00		7 250,00	01.04.97
Consultancy - installasjon & implementasjon Total systems and network integration and server burn-in test. Basic testing will be performed.	1	2 500,00		2 500,00	01.04.97
Cisco C100 - 8 Ports 100 Mbit fast hub	1	7 485,00		7 485,00	01.04.97
Freight insurance for DDP delivery from DanoTech Oslo as to NORGIT in Fredrikstad is billed at 1,5% of contract value	1	4 875,00		4 875,00	01.04.97
Incoming freight charge for Server	1	650,00		650,00	01.04.97
Complete delivery of all goods - DDP Fredrikstad via express carrier to NORGIT.	1	1 000,00		1 000,00	01.04.97

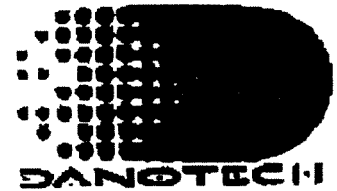
Leveringsbetingelser:
Leveringsmodus:
Betalingsbetingelser:
Salgsbetingelser:

Alle fraktkostnader belastes kunden
 Budbil - Normal levering
 Netto pr. 30 dager
 Skal være vedlagt denne ordrebekr. Hvis ikke må dette opplyses etter umiddelbart etter mottak av ordrebekr.



Ordrebekreftelse

2897-S10-K10



Kundenavn: NORGIT-Senteret
 Bryggeriveien 2
 Postboks 229
 1602 FREDRIKSTAD

Att: Torstein Skancke
Fax: 69 39 49 10

Lev. adresse: NORGIT-Senteret
 Bryggeriveien 2
 1602 FREDRIKSTAD

Att: Torstein Skancke
Merkes: YanTai - Kina

Fak. adresse: NORGIT-Senteret

DanoTech Oslo as
 Hoffsveien 17
 0275 OSLO

Telefon hovedkontor: 22 50 22 50
Telefax hovedkontor: 22 50 22 11

Kundenummer: 10160
Ordrebekr. nr: 2897
Ordrebekr. dato: 21.02.97
Forventet lev. dato: 01.04.97
DanoTech's ref.: Peter Horup
Deres ref.: Torstein Skancke
Deres rek.: YanTai - Kina
Side: 4

Produktbeskrivelse	ANT.	Pris pr. enhet	Rabatt %	Beløp	Vår forventet lev. dato
Installation and configuration of system and network on-site will be charged at DanoTech's standard rates for hourly consultancy. All travel costs w in accordance with norwegian gov't. regulations.					
If partial delivery is required additional freight costs will be invoiced.	40				
23 % mva av 160 175,50				36 840,36	
Ordresum				197 016,00	

Leveringsbetingelser:
Leveringsmetode:
Betalingsbetingelser:
Salgubetingelser:

Alle fraktkostnader belastes kunden
 Budbil - Normal levering
 Netto pr. 30 dager
 Skal være vedlagt denne ordrebekr. Hvis ikke må dette opplyses senest umiddelbart etter mottak av ordrebekr.

Med vennlig hilsen
 DanoTech Oslo as

Peter Horup
 Daglig leder

Mailadresse: peter.horup@danotech.no



Ordrebekreftelse

2896-S10-K10



Kundenavn: NORGIT-Senteret
 Bryggeriveien 2
 Postboks 229
 1602 FREDRIKSTAD

Att: Torstein Skancke
Fax: 69 39 49 10

Lev. adresse: NORGIT-Senteret
 Bryggeriveien 2
 1602 FREDRIKSTAD

Att: Torstein Skancke
Merkes: Heilongjiang - Kina

Fak. adresse: NORGIT-Senteret

DanoTech Oslo as
 Hoffsveien 17
 0275 OSLO

Telefon hovedkontor: 22 50 22 50
Telefax hovedkontor: 22 50 22 11

Kundennummer: 10160
Ordrebekr. nr.: 2896
Ordrebekr. dato: 21.02.97
Forventet lev. dato: 21.02.97
DanoTech's ref.: Peter Horup
Deres ref.: Torstein Skancke
Deres rek.: Heilongjiang - Kina
Side: 1

Produktbeskrivelse	Ant.	Pris pr. enhet	Rabatt %	Brutto	Vår forventet lev. dato
HP NetServer Pentium 200 LH Pro Deal - Model L/64MB Includes two (2) 200 Mhz pentium processors	1	58 000,00		58 000,00	15.02.97
<ul style="list-style-type: none"> * Intel DUAL 200 MHz Pentium processor * 64 bit PCI local bus architecture * Non disk * Dual Fast PCI SCSI-II controller (+ external port) and IDE * 512 KB Cache write-back * CD-ROM drive 8-spin SCSI * Super VGA graphics controller * 4 PCI slot / 1 combi PCI/EISA / 4 EISA slot * 8 half-height mass storage shelves * 3 year on-site warranty 					
HP 4.2GB Hot Swap Ultra SCSI Harddisk Drive Includes 12 GB SCSI Fast & Wide disk storage capacity	3	9 600,00		28 800,00	15.02.97
HP 64 MB 60ns DIMM Accessory for HP NetServer LH Plus Includes a total of 128 MB ECC RAM	2	5 600,00		11 200,00	16.02.97
HP DeskDirect 10/100TX PCI Fast 100 Mbit LAN Adapter	2	1 045,00		2 090,00	15.02.97
HP 17" Ultra VGA monitor 1280*1024 Dpi	1	4 990,00		4 990,00	15.02.97
Drop cable 10 meter TP / 10base-T	1	385,00		385,00	15.02.97

Leveringsbetingelser:
Leveringsmetode:
Betalingsbetingelser:
Salgsbetingelser:

Alle fraktkostnader belastes kunden
 Budbil - Normal levering
 Netto pr. 30 dager
 Skal være vedlagt denne ordrebekr. Hvis ikke må dette opplyses selger umiddelbart etter mottak av ordrebekr.



Ordrebekreftelse

2896-S10-K10



Kundenavn: NORGIT-Senteret
 Bryggeriveien 2
 Postboks 229
 1602 FREDRIKSTAD
Att: Torstein Skancke
Fax: 69 39 49 10

Lev. adresse: NORGIT-Senteret
 Bryggeriveien 2
 1602 FREDRIKSTAD
Att: Torstein Skancke
Merkes: Heilongjiang - Kina

Fak. adresse: NORGIT-Senteret

DanoTech Oslo as
 Hoffsveien 17
 0275 OSLO
Telefon hovedkontor: 22 50 22 50
Telefax hovedkontor: 22 50 22 11
Kundenummer: 10160
Ordrebekr. nr: 2896
Ordrebekr. dato: 21.02.97
Forventet lev. dato: 21.02.97
DanoTech's ref.: Peter Horup
Deres ref.: Torstein Skancke
Deres rek.: Heilongjiang - Kina
Side: 2

Produktbeskrivelse	Ant.	Pris pr. enhet	Rabatt %	Belop	Vår forventet lev. dato
Consultancy - Installation & Implementation Installation of HOT-swap disks Prerequisite for quote is that all installation and testing is performed at DanoTech's office in Oslo, Norway	2	650,00		1 300,00	15.02.97
Consultancy - Installasjon & Implementasjon Installasjon and testing of RAM is estimated at 20 min. Prerequisite for quote is that all installation and testing is performed at DanoTech's office in Oslo, Norway	1	216,00		216,00	15.02.97
Consultancy - Installasjon & Implementasjon Installation and testing of 10/100 Mbit network adapter Prerequisite for quote is that all installation and testing is performed at DanoTech's office in Oslo, Norway	1	162,50		162,50	15.02.97
MS Windows NT Server 4.0 (Eng.) - 10 clients	1	7 990,00		7 990,00	15.02.97
MS Windows NT Server Resource Kit	1	1 295,00		1 295,00	15.02.97
HP SureStore Tape 6000i 8 GB internal DAT This unit has a maximum capacity of 16Gb compressed	1	6 495,00		6 495,00	15.02.97
Moulding kit for 5.25" Tape/DAT/CD-ROM for HP NetServer	1	647,00		647,00	15.02.97
HP 4 mm data tape, DDS-DAT-cassette, 120 m, 4.0 GB Includes a total of 15 4mm DAT tapes	3	685,00		2 055,00	15.02.97
Chevyenne ARCserver 6.00 Enterprise for Win NT Server	1	5 750,00		5 750,00	15.02.97

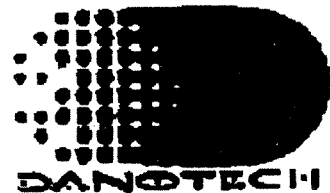
Leveringsbetingelser:
Leveringsmetode:
Betalingsbetingelser:
Salgsbetingelser:

Alle fraktkostnader belastes kunden
 Budbil - Normal levering
 Netto pr. 30 dager
 Skal være vedlagt denne ordrebekr. Hvis ikke må dette opplyses selger umiddelbart etter mottak av ordrebekr.



Ordrebekreftelse

2896-S10-K10



Kundenavn: NORGIT-Senteret
 Bryggeriveien 2
 Postboks 229
 1602 FREDRIKSTAD
 Att: Torstein Skancke
 Fax: 69 39 49 10

DanoTech Oslo as
 Hoffsveien 17
 0275 OSLO

Telefon hovedkontor: 22 50 22 50
 Telefaks hovedkontor: 22 50 22 11

Kundennummer: 10160
 Ordrebekr. nr: 2896
 Ordrebekr. dato: 21.02.97
 Forventet lev. dato: 21.02.97
 DanoTech's ref.: Peter Harup
 Deres ref.: Torstein Skancke
 Deres rek.: Heilongjiang - Kina
 Side: 3

Lev. adresse: NORGIT-Senteret
 Bryggeriveien 2
 1602 FREDRIKSTAD

Att: Torstein Skancke
 Merkes: Heilongjiang - Kina

Fak. adresse: NORGIT-Senteret

Produktbeskrivelse	Ant.	Pris pr. enhet	Rabatt %	Beløp	Vår forventet lev. dato
Consultancy - Installasjon & Implementasjon Installation & testing of DAT estimated at 1 hour Prerequisite for quote is that all installation and testing is performed at DanoTech's office in Oslo, Norway	1	650,00		650,00	15.02.97
Consultancy - Installasjon & Implementasjon Installation & testing of ARCserve estimated at 3 hours Prerequisite for quote is that all installation and testing is performed at DanoTech's office in Oslo, Norway	2	650,00		1 300,00	15.02.97
HP PowerWise UPS 2100 VA Battery Pack	1	3 090,00		3 090,00	15.02.97
HP PowerWise 2100 VA UPS	1	7 250,00		7 250,00	15.02.97
Consultancy - Installasjon & Implementasjon Total systems and network integration and server burn-in test. Basic tuning will be performed.	1	2 500,00		2 500,00	15.02.97
Cisco 2501 Router AUI/Serie 10 Mbit	2	7 450,00		14 900,00	15.02.97
Cisco AUI til TP transiver 10 Mbit	2	325,00		650,00	15.02.97
Cisco IP software til Cisco 2501	2	8 981,60		17 963,20	15.02.97
Cable for Cisco 2501	2	936,00		1 872,00	15.02.97
NOTE: Cisco products are not under warranty or support by Hewlett-Packard. All contact is directly with Cisco. 100 Mbit FAST on LAN and 10 Mbit router should join via a switch. The requested solution of using two network cards in the server is untried and unsupported.					

Leveringsbetingelser:
 Leveringsmetode:
 Betalingsbetingelser:
 Salgsbetingelser:

Alle fraktkostnader belastes kunden
 Budbil - Normal levering
 Netto pr. 30 dager
 Skal være vedlagt denne ordrebekr. Hvis ikke må dette opplyses selger umiddelbart etter mottak av ordrebekr.



Ordrebekreftelse

2896-S10-K10



Kundenavn: NORGIT-Senteret
 Bryggeriveien 2
 Postboks 229
 1602 FREDRIKSTAD
Att: Torstein Skancke
Fax: 69 39 49 10

Lev. adresse: NORGIT-Senteret
 Bryggeriveien 2
 1602 FREDRIKSTAD
Att: Torstein Skancke
Merkes: Heilongjiang - Kina

Fak. adresse: NORGIT-Senteret

DanoTech Oslo as
 Hoffsvveien 17
 0275 OSLO

Telefon hovedkontor: 22 50 22 50
Telefax hovedkontor: 22 50 22 11

Kundenummer: 10160
Ordrebekr. nr: 2896
Ordrebekr. dato: 21.02.97
Forventet lev. dato: 21.02.97
DanoTech's ref.: Peter Horup
Deres ref.: Torstein Skancke
Deres rek.: Heilongjiang - Kina
Side: 4

Produktbeskrivelse	Ant.	Pris pr. enhet	Rabatt %	Beløp	Vår forventet lev. dato
Cisco C108 - 8 Ports 100 Mbit fast hub	1	7 485,00		7 485,00	15.02.97
Incoming freight charge for Server	1	650,00		650,00	15.02.97
Complete delivery of all goods - DDP Fredrikstad via express carrier to NORGIT.	1	1 000,00		1 000,00	15.02.97
Installation and configuration of system and network on-site will be charged at DanoTech's standard rates for hourly consultancy. All travel costs w in accordance with norwegian gov't. regulations.					
If partial delivery is required additional freight costs will be invoiced.					
23 % mva av 190 685,70				43 857,71	
Ordresum				234 543,50	

Leveringsbetingelser:
 Leveringsmetode:
 Betalingsbetingelser:
 Salgsbetingelser:

Alle fraktkostnader belastes kunden
 Budbil - Normal levering
 Netto pr. 30 dager
 Skal være vedlagt denne ordrebekr. Hvis ikke må dette opplyses selger umiddelbart etter mottak av ordrebekr.

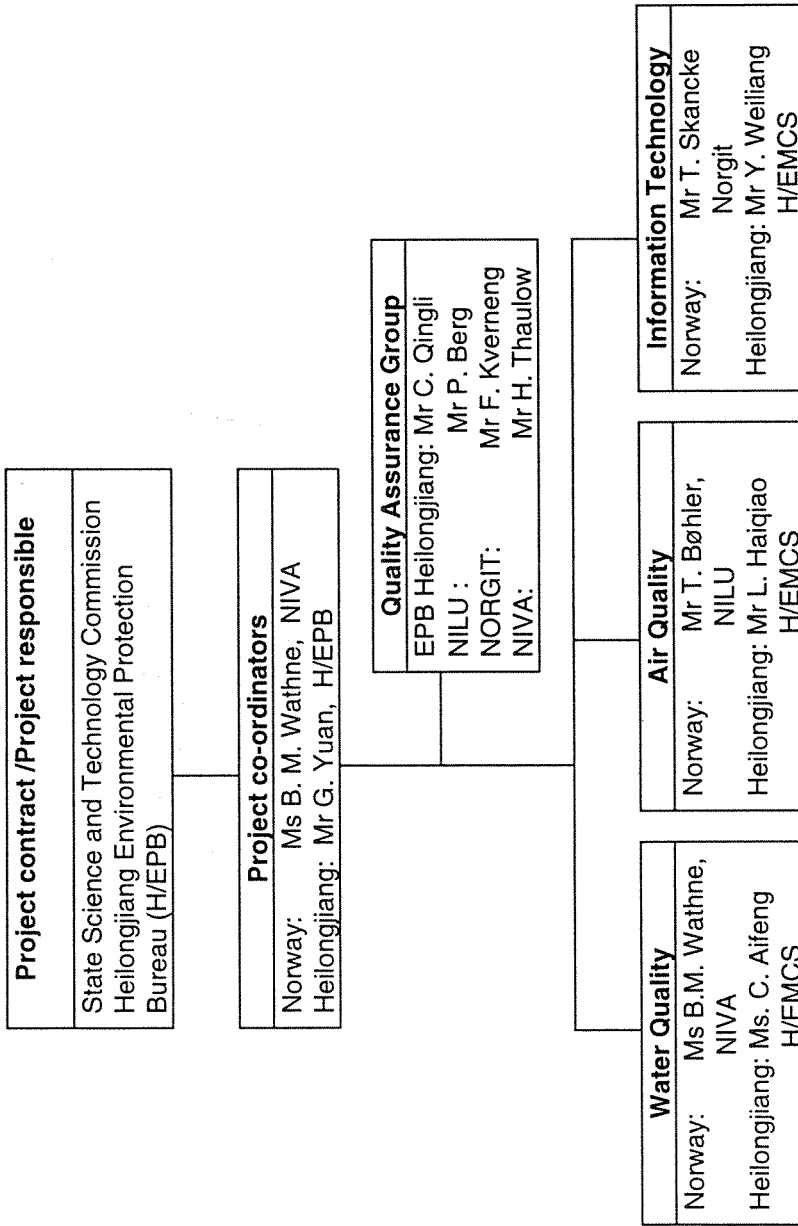
Med vennlig hilsen
 DanoTech Oslo as

Peter Horup
 Daglig leder

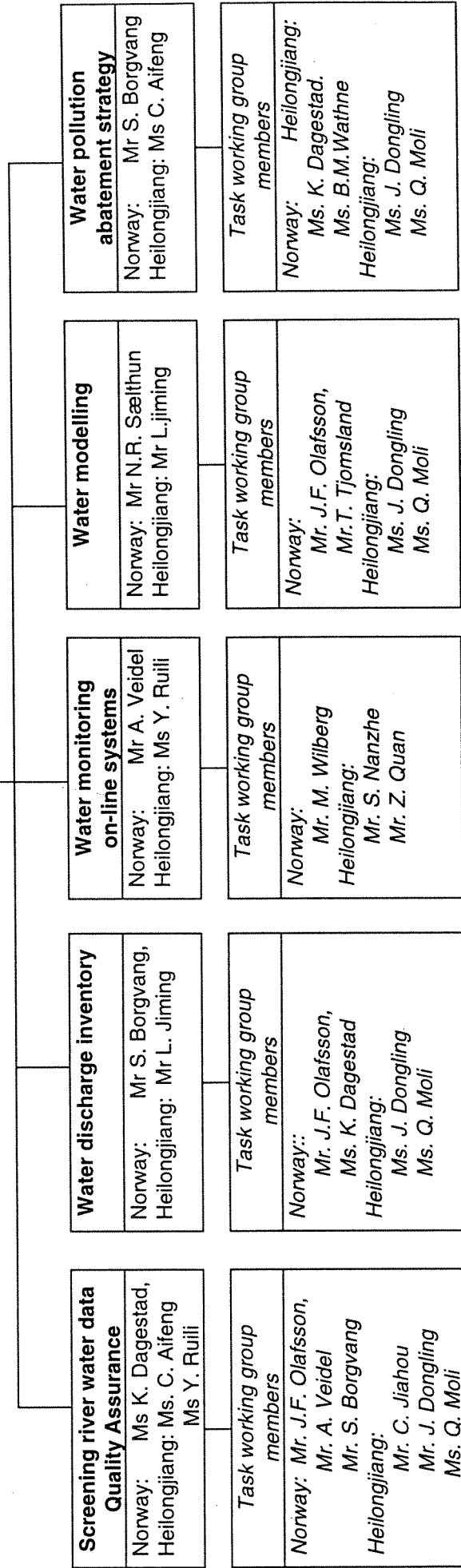
Mailadresse: peter.horup@danotech.no



**The Project Organisation for
The Surveillance of Water Quality in the Songhua River in Heilongjiang Province, China**



Water Quality	
Norway:	Ms B. M. Wathne NIVA
Heilongjiang:	Ms C. Aifeng EMCS



Screening river water data Quality Assurance	
Norway:	Ms K. Dagestad, Ms. C. Aifeng
Heilongjiang:	Ms Y. Ruiji

<i>Task working group members</i>	
Norway:	Mr. J.F. Olafsson, Mr. A. Veidel Mr. S. Borgvang
Heilongjiang:	Mr. C. Jiahou Mr. J. Dongling Ms. Q. Moli

Water discharge inventory	
Norway:	Mr S. Borgvang, Mr L. Jiming
Heilongjiang:	Mr L. Jiming

<i>Task working group members</i>	
Norway:	Mr. J.F. Olafsson, Ms. K. Dagestad
Heilongjiang:	Ms. J. Dongling Ms. Q. Moli

Water monitoring on-line systems	
Norway:	Mr A. Veidel Ms Y. Ruiji
Heilongjiang:	Ms Y. Ruiji

<i>Task working group members</i>	
Norway:	Mr. M. Wilberg
Heilongjiang:	Mr. S. Nanzhe Mr. Z. Quan

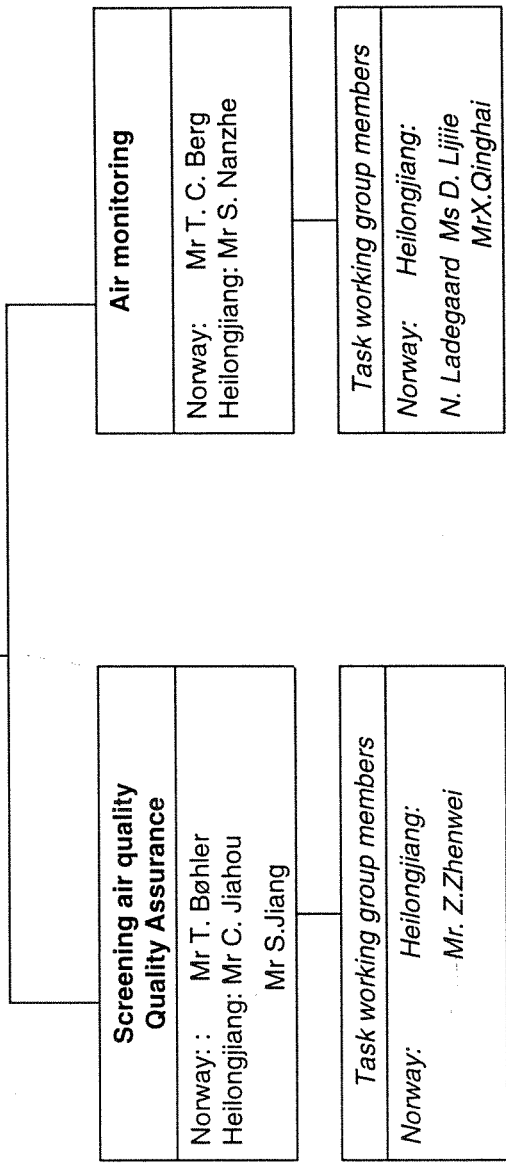
Water modelling	
Norway:	Mr N.R. Sæthun
Heilongjiang:	Mr L. Jiming

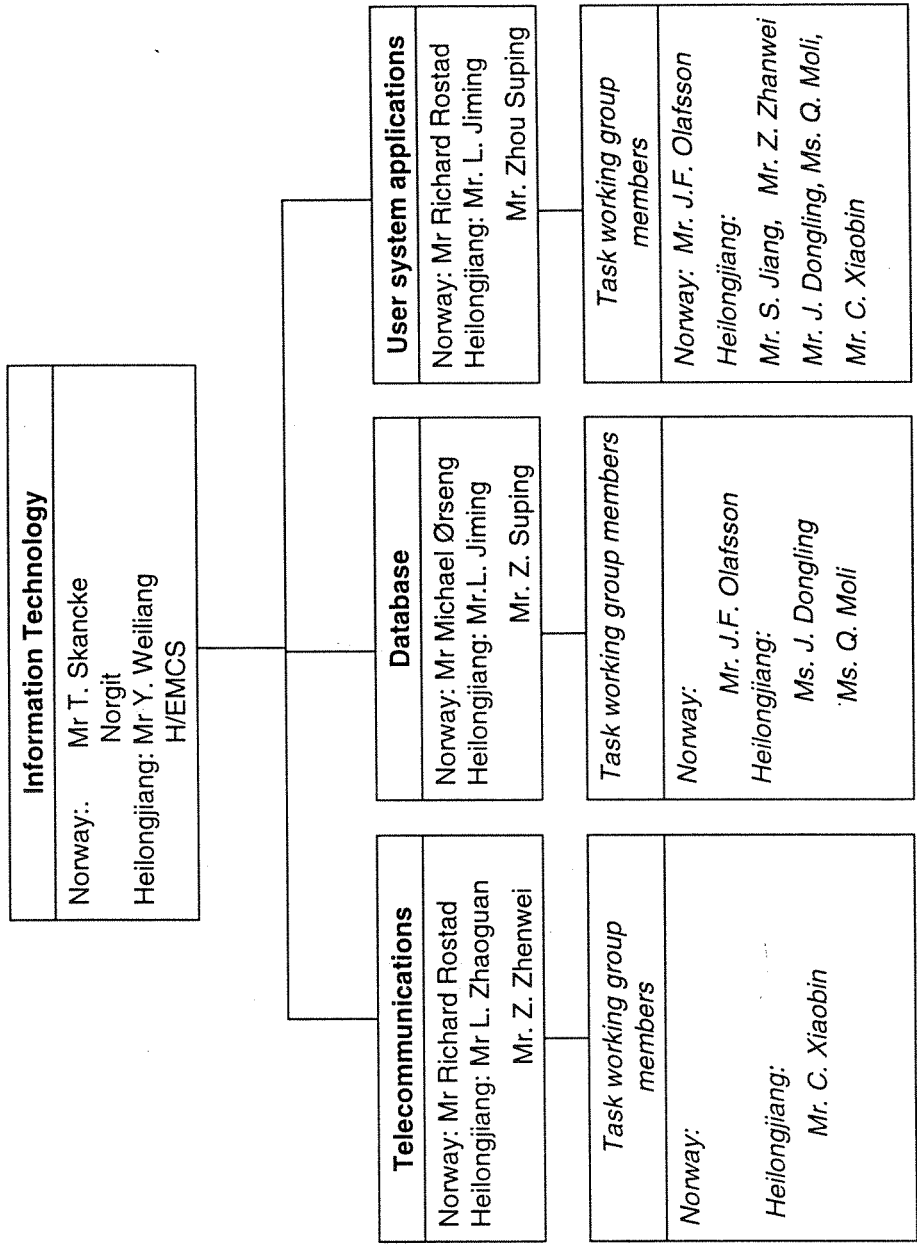
<i>Task working group members</i>	
Norway:	Mr. J.F. Olafsson, Mr. T. Tjomsland
Heilongjiang:	Ms. J. Dongling Ms. Q. Moli

Water pollution abatement strategy	
Norway:	Mr S. Borgvang Ms C. Aifeng
Heilongjiang:	Ms C. Aifeng

<i>Task working group members</i>	
Norway:	Ms. K. Dagestad, Ms. B.M. Wathne
Heilongjiang:	Ms. J. Dongling Ms. Q. Moli

Air Quality	
Norway:.	Mr T. Bøhler NILU
Heilongjiang:	Mr L. Haiqiao H/EMCS





SSTC = State Science and Technology Commission
H/EPB = Heilongjiang Environmental Protection Bureau
H/EMC = Heilongjiang Environmental Central Monitoring Station

Norwegian Institute for Water Research

P.O. Box 173 Kjelsås Telephone: + 47 22 18 51 00
N-0411 Oslo Telefax: + 47 22 18 52 00

By ordering the report, please use
serial number 3641-97

ISBN 82-577-3202-8